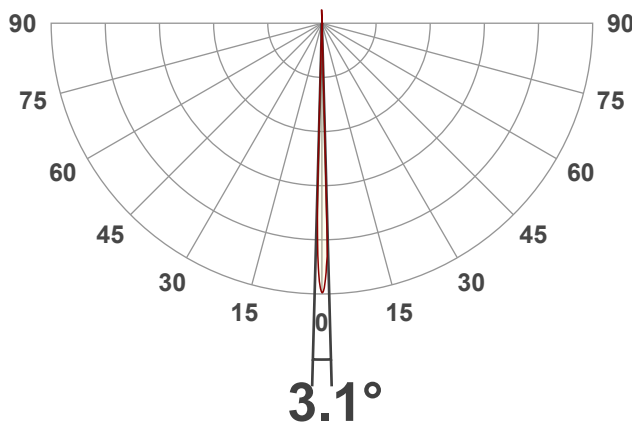


Overview



VL3600 LT Profile IP



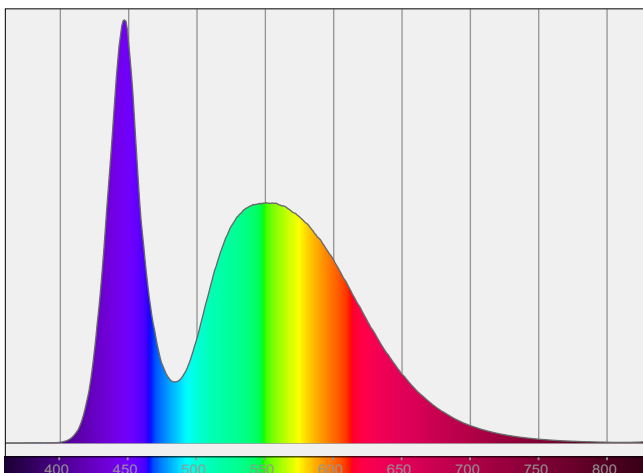
Output 10911 lm

Measurement details

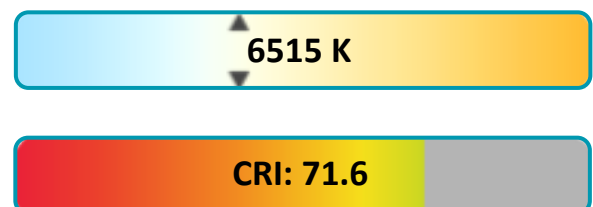
Zoom DMX	32/224
Edge DMX	0/0
Date	5/6/2024
Power	1400.3 W
	217 V / 6.60 A
Frequency	60 Hz
Temperature	24°C +/-3°C
Measurement No.	VFR-240506-0231-MS

Beam angles

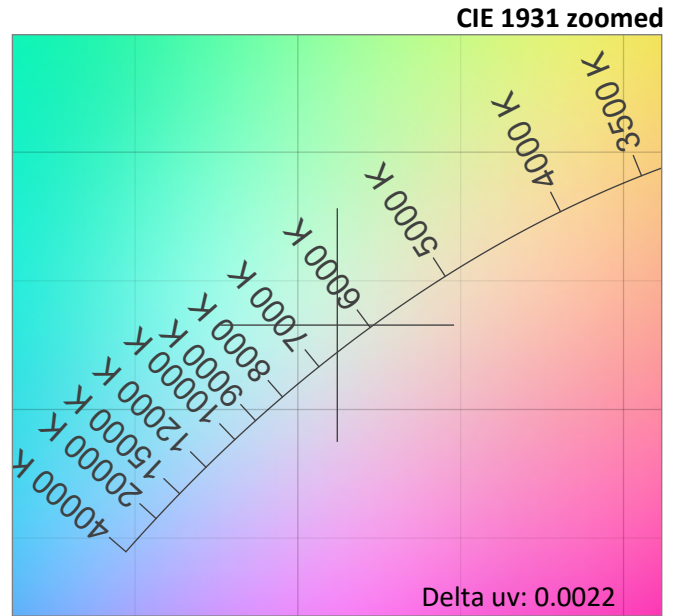
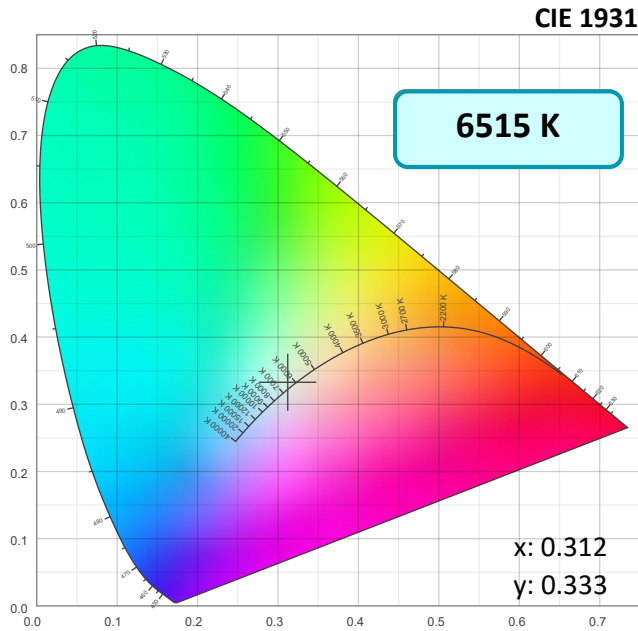
Beam angle (50%)	3.1°
Field Angle (10%)	3.6°
Cut-off Angle (2.5%)	3.9°



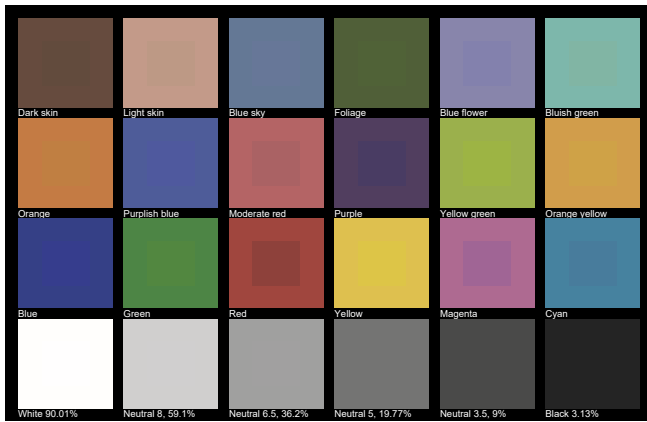
Color



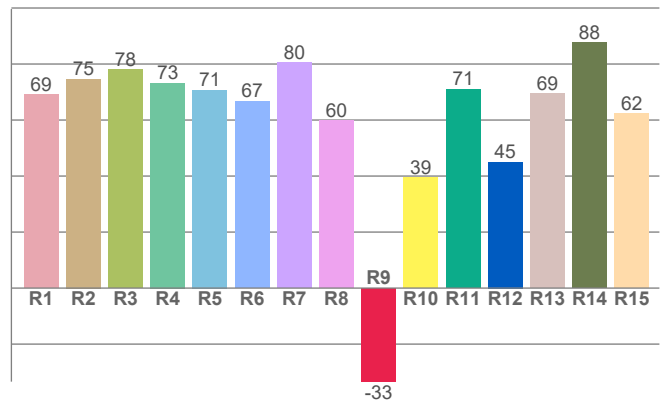
Colorimetry



TLCI: 51



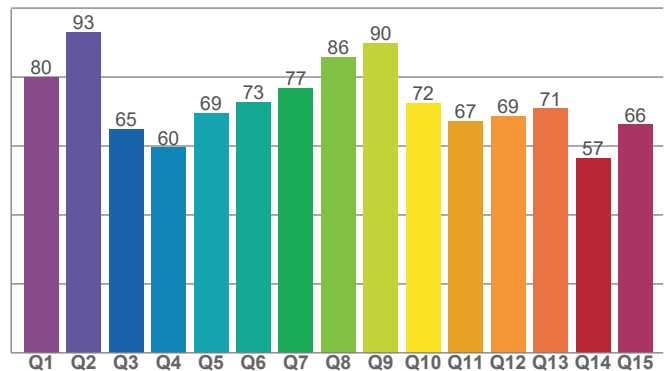
Color Rendering Index (CIE 1995) CRI: 71.6 (R1-R8)



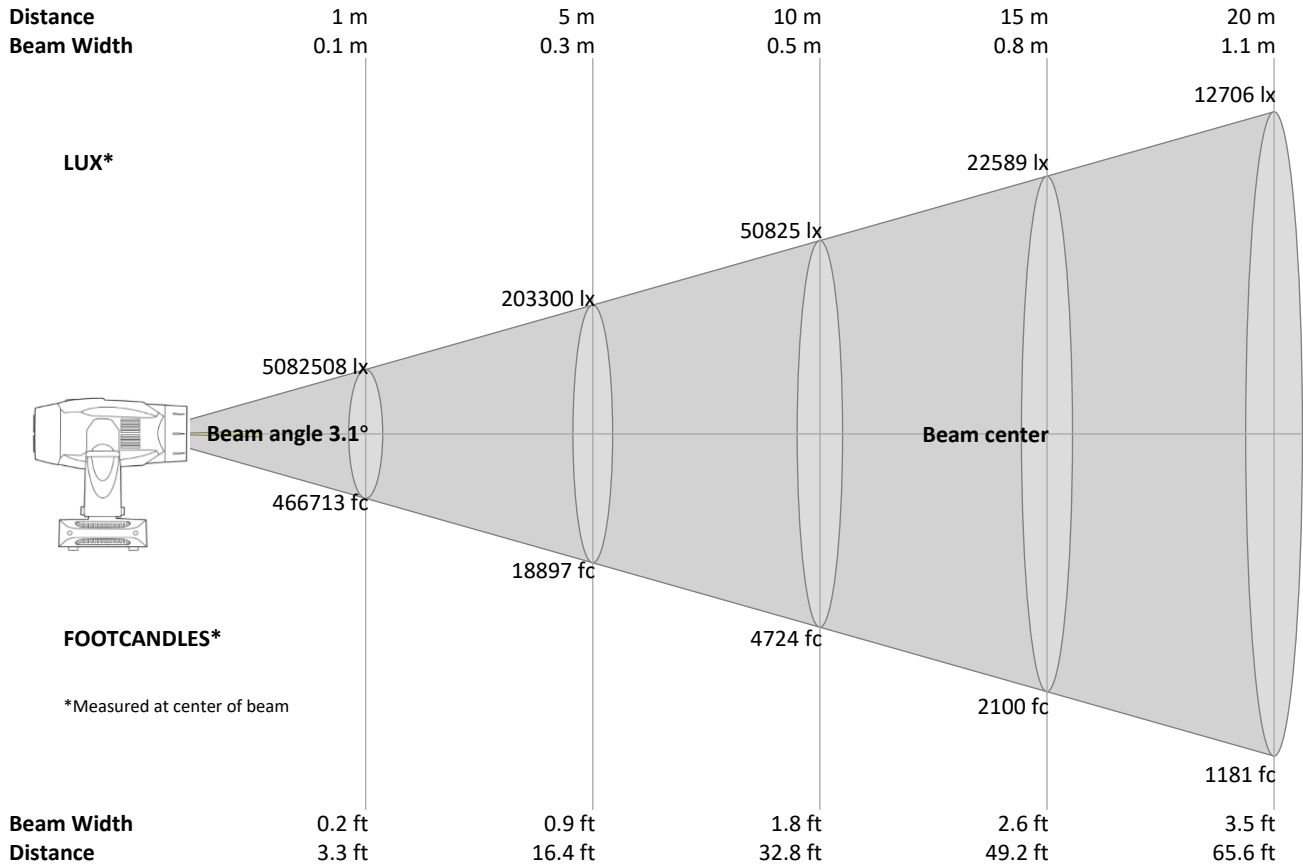
TLCI Qa values

Dark skin Q1 67.11	Light skin Q2 62.41	Blue sky Q3 64.19	Foliage Q4 90.33	Blue flower Q5 66.04	Bluish green Q6 69.73
Orange Q7 53.70	Purplish blue Q8 81.39	Moderate red Q9 65.60	Purple Q10 41.83	Yellow green Q11 80.00	Orange yellow Q12 42.12
Blue Q13 76.16	Green Q14 69.69	Red Q15 32.69	Yellow Q16 62.63	Magenta Q17 27.08	Cyan Q18 59.65

Color Quality Scale by reference color

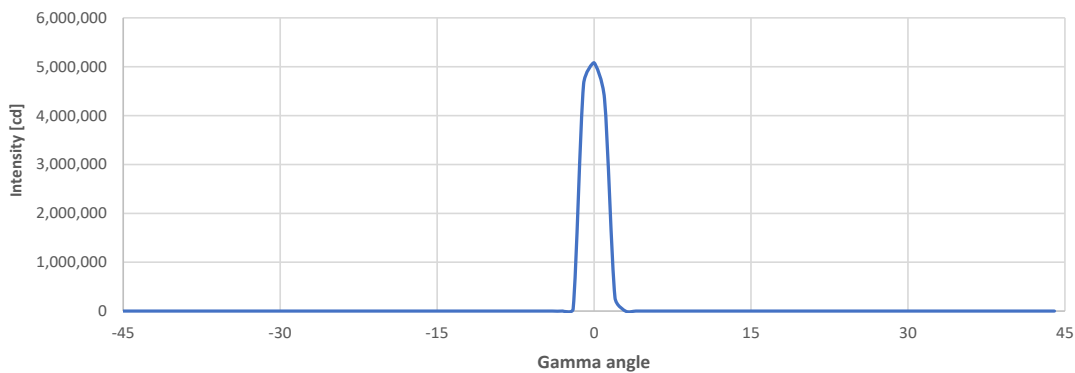


Beam Details



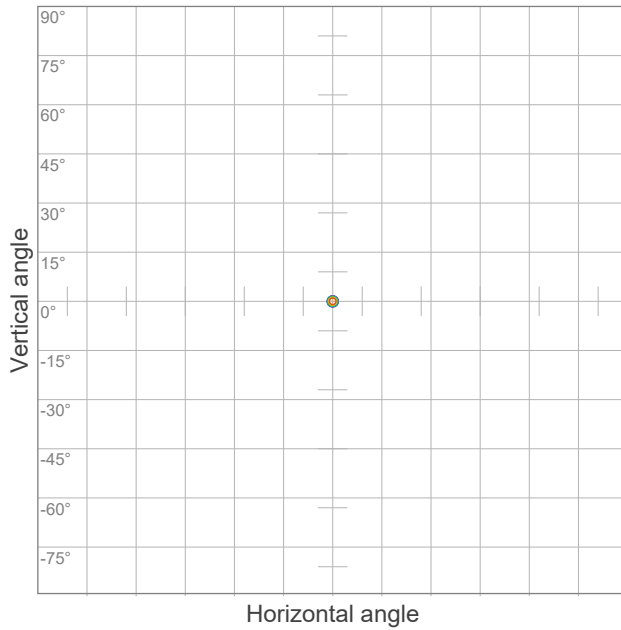
Beam center illuminances from 1 – 20 m (3.3 – 65.6 ft)

1	2	3	4	5	6	7	8	9	10	11	12	13	14	15	16	17	18	19	20	m
3.3	6.6	9.8	13.1	16.4	19.7	23	26.2	29.5	32.8	36.1	39.4	42.7	45.9	49.2	52.5	55.8	59.1	62.3	65.6	ft
5082508	1270627	564723	317657	203300	141181	103725	79414	62747	50825	42004	35295	30074	25931	22589	19854	17587	15687	14079	12706	lux
472180.5	118045.1	52464.5	29511.3	18887.2	113116.1	9636.3	7377.8	5829.4	4721.8	3902.3	3279	2794	2409.1	2098.6	1844.5	1633.8	1457.3	1308	1180.5	fc



Beam angle 50% 3.10
Field angle 10% 3.60
Cutoff angle 2.5% 3.90

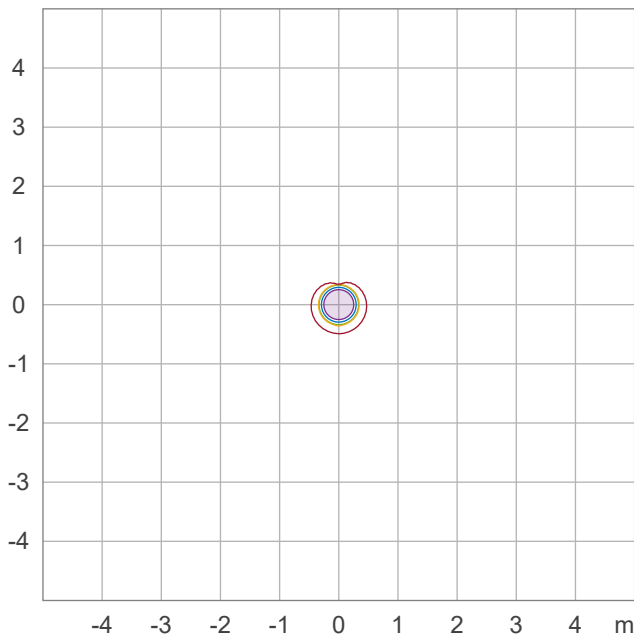
Iso-intensity Diagram (Iso-candela)



90 %	4574258.0 cd
80 %	4066007.0 cd
70 %	3557756.0 cd
60 %	3049505.0 cd
50 %	2541254.0 cd
40 %	2033003.0 cd
30 %	1524753.0 cd
20 %	1016502.0 cd
10 %	508250.8 cd

Peak intensity: 5082509.0 cd
Number of c-planes: 2

Iso-illuminance Diagram (Iso-lux)



1.0 %	508.3 lx
5.0 %	2541.3 lx
10.0 %	5082.5 lx
30.0 %	15247.5 lx
50.0 %	25412.5 lx

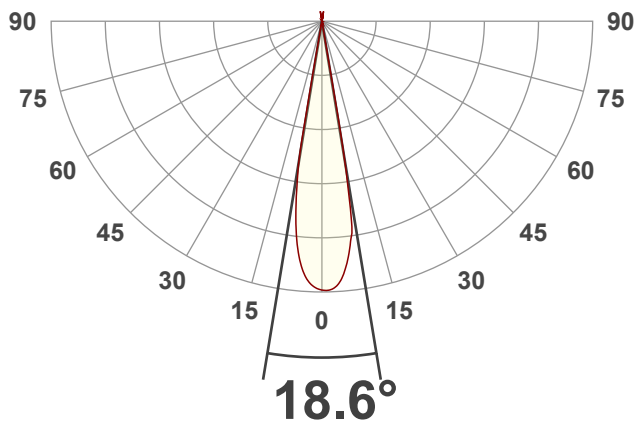
Peak illuminance: 50825.1 lx
Mounting height: 10.0 m
Number of c-planes: 2

© 2024 Signify Holding. All rights reserved. All trademarks are owned by Signify Holding or their respective owners. The information provided herein is subject to change, without notice. Signify does not give any representation or warranty as to the accuracy or completeness of the information included herein and shall not be liable for any action in reliance thereon. The information presented in this document is not intended as any commercial offer and does not form part of any quotation or contract, unless otherwise agreed by Signify. Data subject to change

Overview



VL3600 LT Profile IP



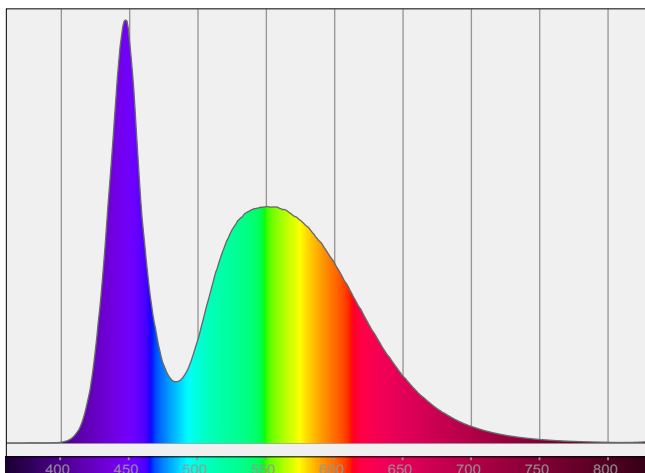
Output **39388 lm**

Measurement details

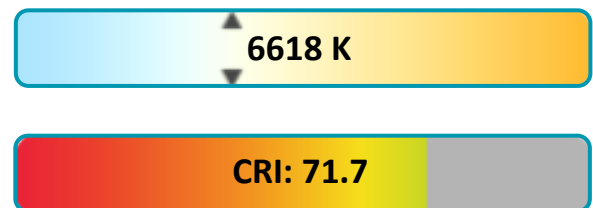
Zoom DMX	164/23
Edge DMX	243/11
Date	5/7/2024
Power	1397.1 W
	216 V / 6.60 A
Frequency	60 Hz
Temperature	24°C +/-3°C
Measurement No.	VFR-240507-0260-MS

Beam angles

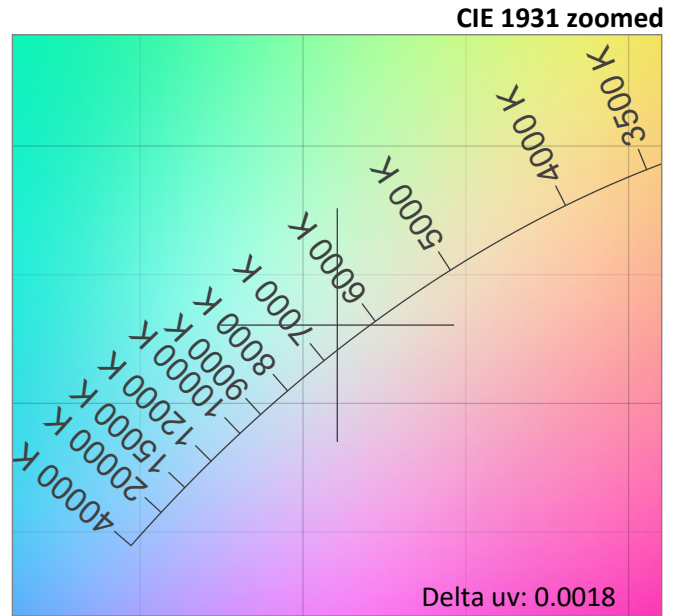
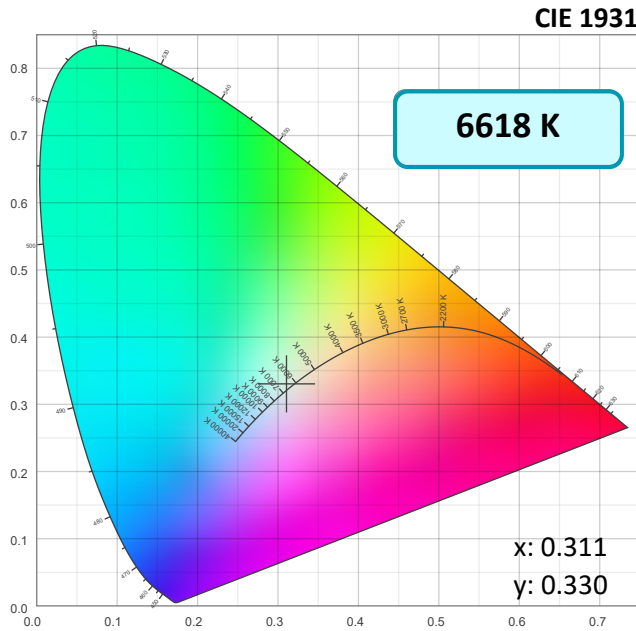
Beam angle (50%)	18.6°
Field Angle (10%)	20.6°
Cut-off Angle (2.5%)	20.9°



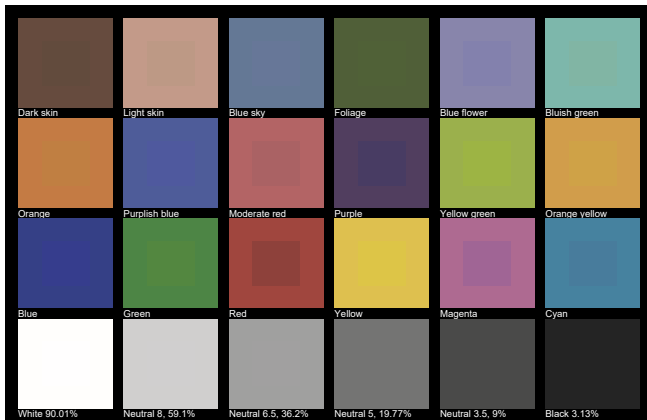
Color



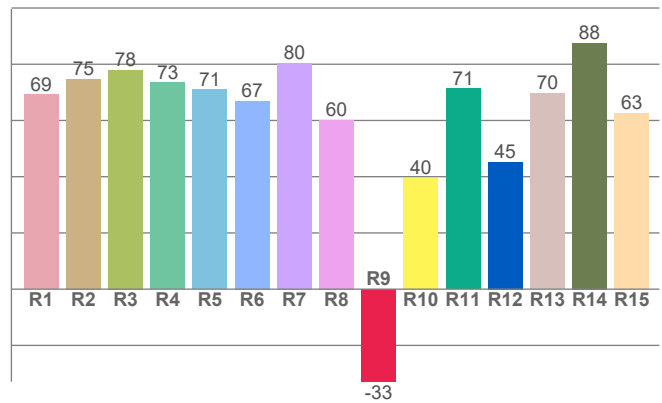
Colorimetry



TLCI: 51



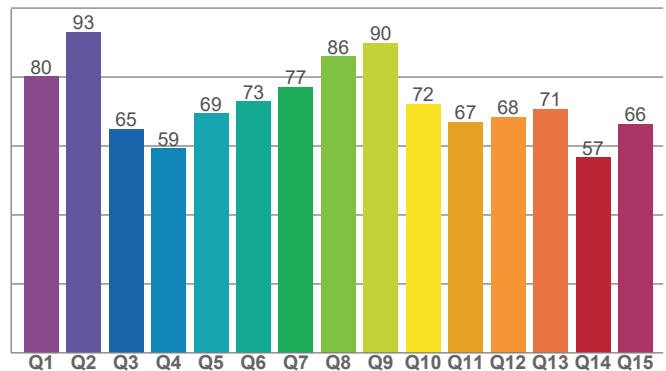
Color Rendering Index (CIE 1995) CRI: 71.7 (R1-R8)



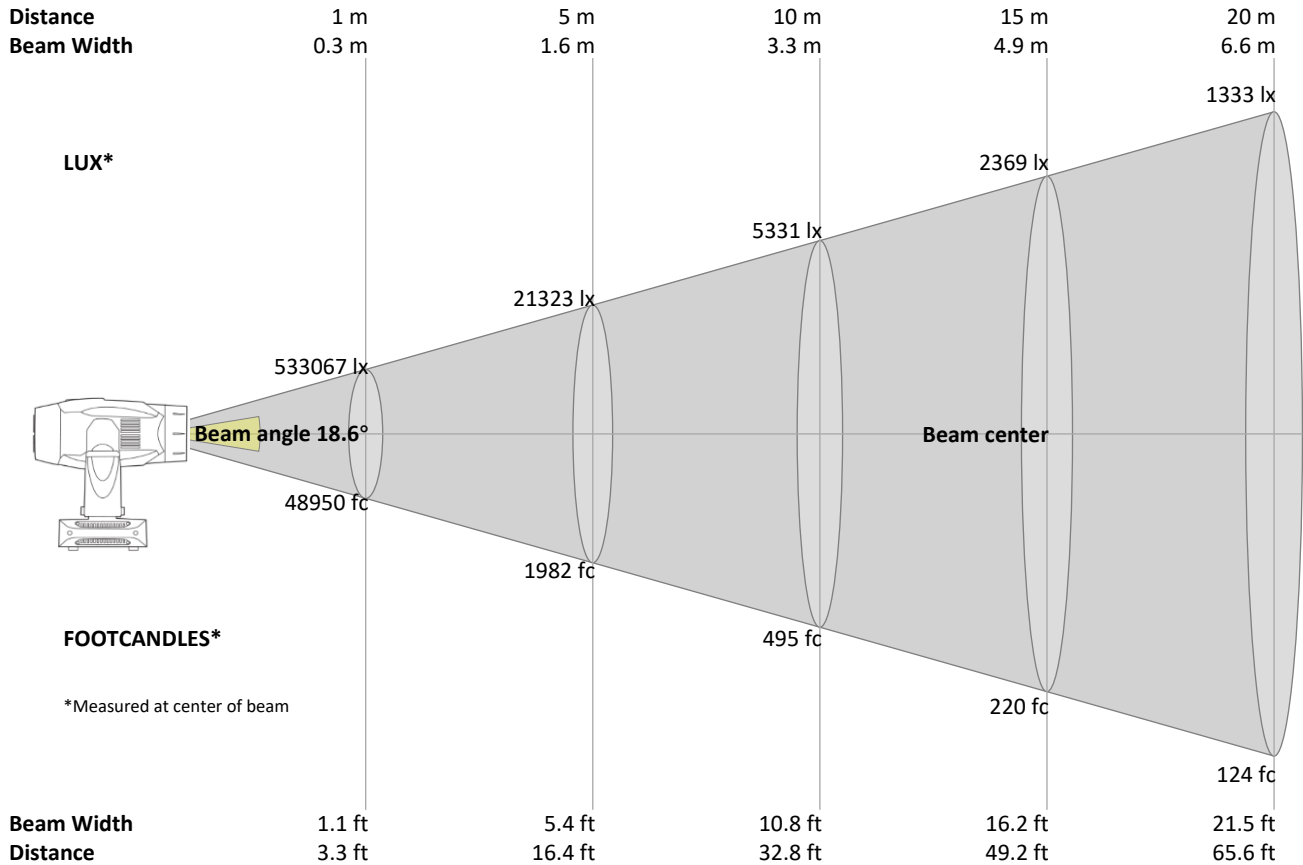
TLCI Qa values

Dark skin Q1 66.70	Light skin Q2 62.39	Blue sky Q3 64.08	Foliage Q4 90.34	Blue flower Q5 65.92	Bluish green Q6 70.23
Orange Q7 53.29	Purplish blue Q8 81.38	Moderate red Q9 65.18	Purple Q10 41.78	Yellow green Q11 79.98	Orange yellow Q12 41.81
Blue Q13 76.13	Green Q14 69.65	Red Q15 32.23	Yellow Q16 62.43	Magenta Q17 26.89	Cyan Q18 59.06

Color Quality Scale by reference color

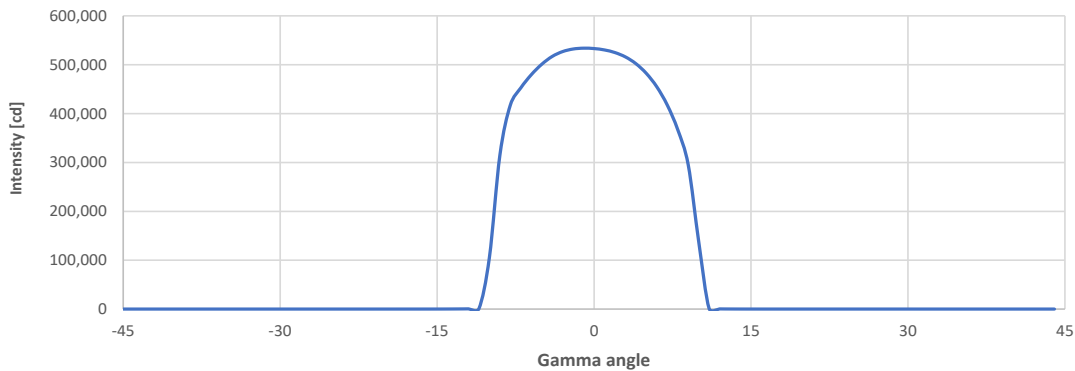


Beam Details

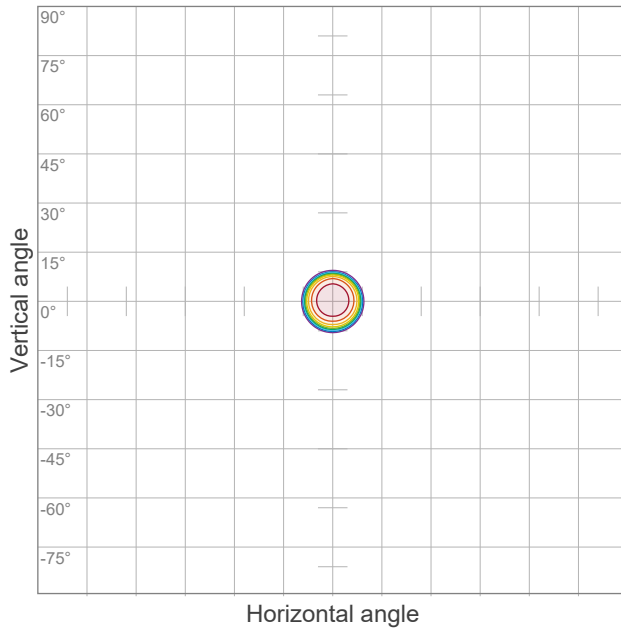


Beam center illuminances from 1 – 20 m (3.3 – 65.6 ft)

1	2	3	4	5	6	7	8	9	10	11	12	13	14	15	16	17	18	19	20	m
3.3	6.6	9.8	13.1	16.4	19.7	23	26.2	29.5	32.8	36.1	39.4	42.7	45.9	49.2	52.5	55.8	59.1	62.3	65.6	ft
533067	133267	59230	33317	21323	14807	10879	8329	6581	5331	4406	3702	3154	2720	2369	2082	1845	1645	1477	1333	lux
49523.6	12380.9	5502.6	3095.2	1980.9	1375.7	1010.7	773.8	611.4	495.2	409.3	343.9	293	252.7	220.1	193.5	171.4	152.9	137.2	123.8	fc



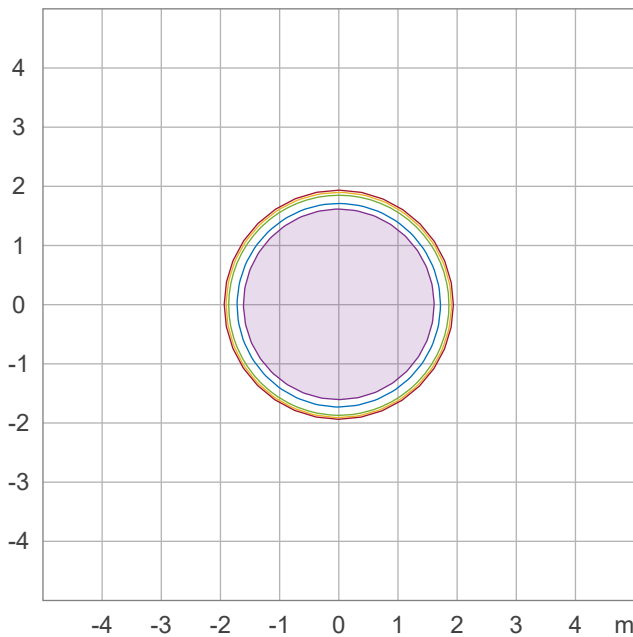
Iso-intensity Diagram (Iso-candela)



90 %	480469.8 cd
80 %	427084.3 cd
70 %	373698.8 cd
60 %	320313.3 cd
50 %	266927.7 cd
40 %	213542.2 cd
30 %	160156.6 cd
20 %	106771.1 cd
10 %	53385.5 cd

Peak intensity: 53385.4 cd
Number of c-planes: 2

Iso-illuminance Diagram (Iso-lux)



1.0 %	53.4 lx
5.0 %	266.8 lx
10.0 %	533.6 lx
30.0 %	1600.8 lx
50.0 %	2668.1 lx

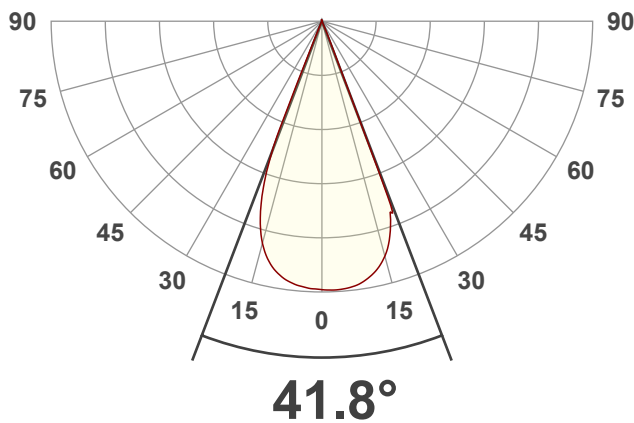
Peak illuminance: 5336.1 lx
Mounting height: 10.0 m
Number of c-planes: 2

© 2024 Signify Holding. All rights reserved. All trademarks are owned by Signify Holding or their respective owners. The information provided herein is subject to change, without notice. Signify does not give any representation or warranty as to the accuracy or completeness of the information included herein and shall not be liable for any action in reliance thereon. The information presented in this document is not intended as any commercial offer and does not form part of any quotation or contract, unless otherwise agreed by Signify. Data subject to change

Overview



VL3600 LT Profile IP



Output

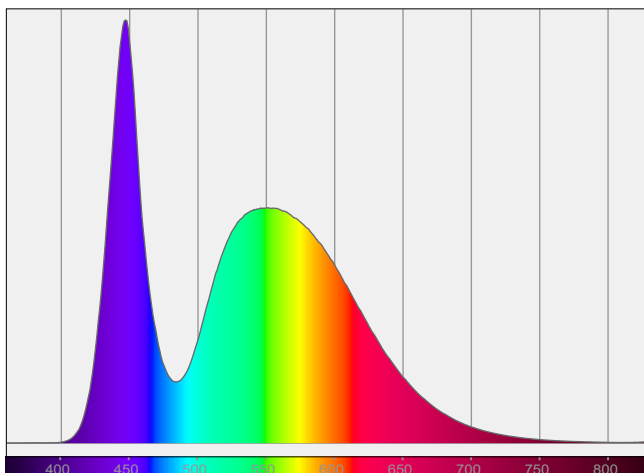
38429 lm

Measurement details

Zoom DMX	255/255
Edge DMX	208/46
Date	5/6/2024
Power	1403.6 W
	217 V / 6.60 A
Frequency	60 Hz
Temperature	24°C +/-3°C
Measurement No.	VFR-240506-0235-MS

Beam angles

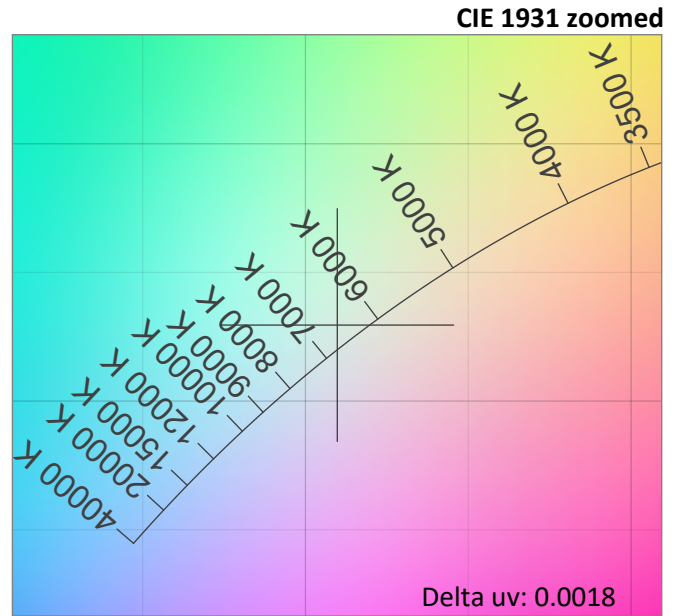
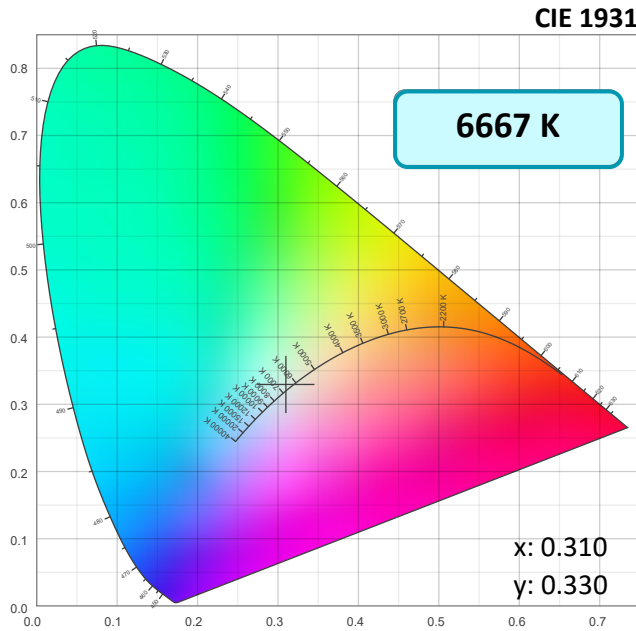
Beam angle (50%)	41.8°
Field Angle (10%)	44.1°
Cut-off Angle (2.5%)	45.5°



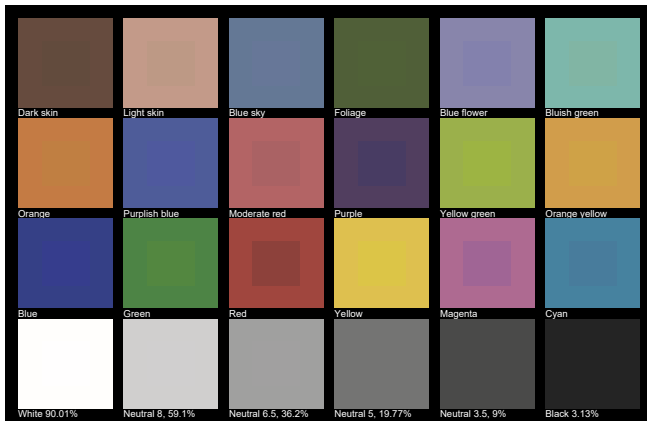
Color



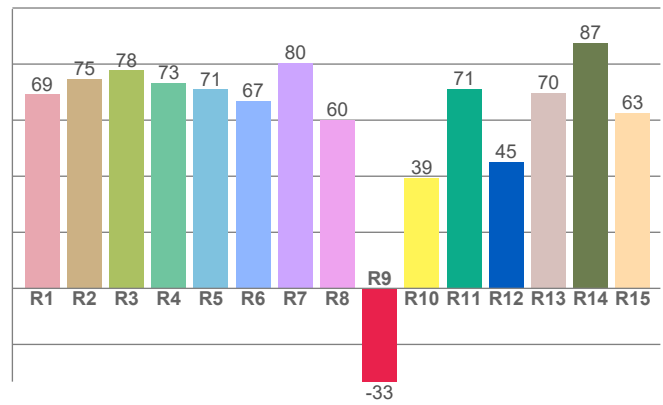
Colorimetry



TLCI: 51



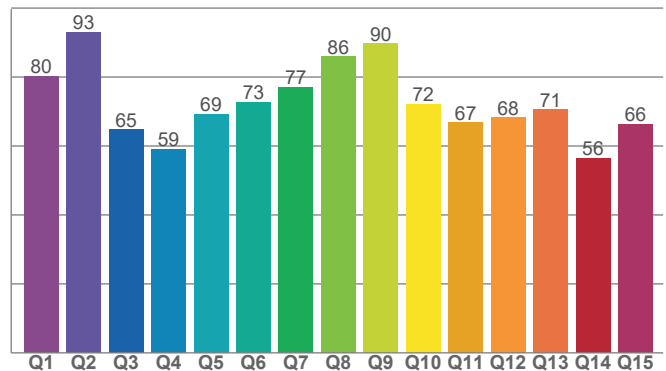
Color Rendering Index (CIE 1995) CRI: 71.7 (R1-R8)



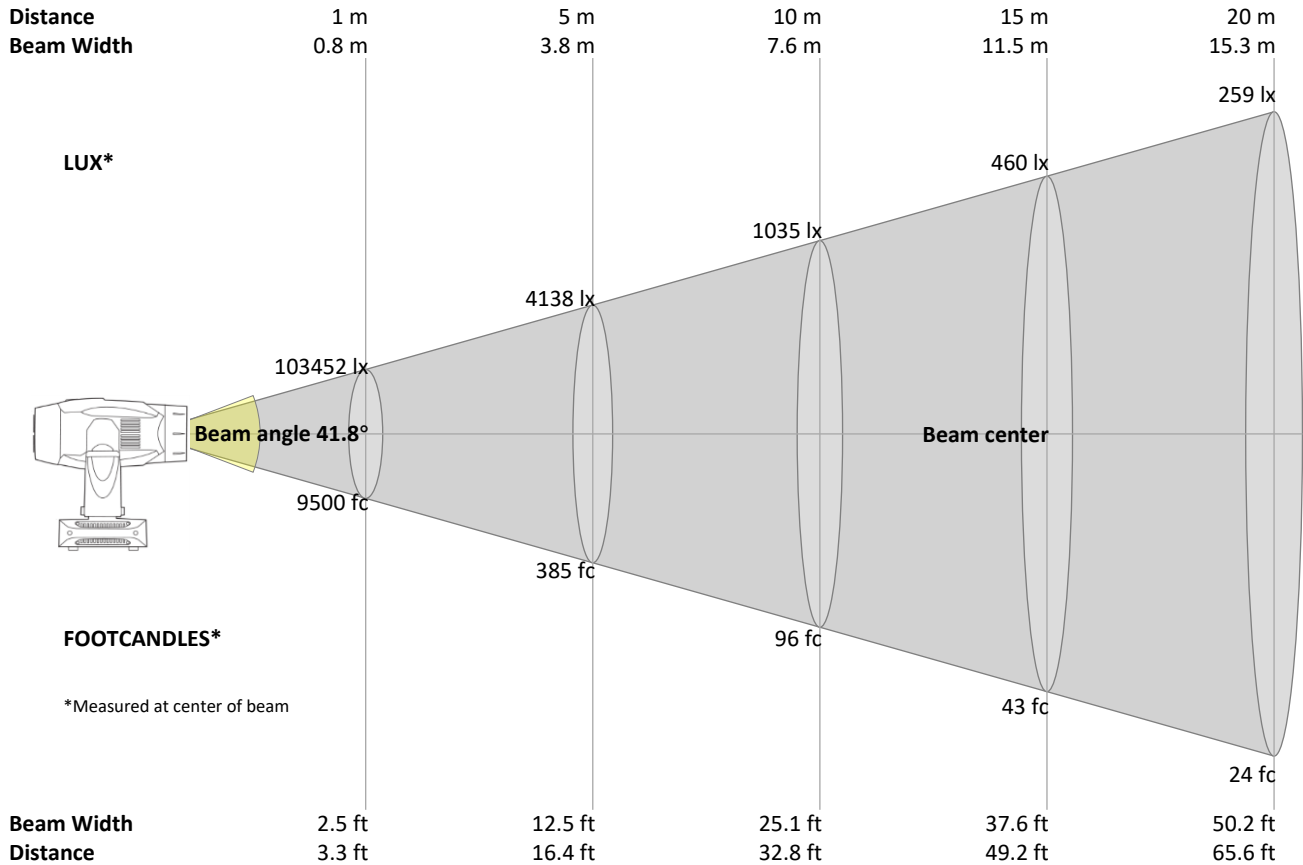
TLCI Qa values

Dark skin Q1 66.40	Light skin Q2 62.21	Blue sky Q3 63.84	Foliage Q4 90.25	Blue flower Q5 65.74	Bluish green Q6 70.27
Orange Q7 52.88	Purplish blue Q8 81.27	Moderate red Q9 64.69	Purple Q10 41.62	Yellow green Q11 79.86	Orange yellow Q12 41.43
Blue Q13 76.02	Green Q14 69.42	Red Q15 31.82	Yellow Q16 62.13	Magenta Q17 26.62	Cyan Q18 58.55

Color Quality Scale by reference color

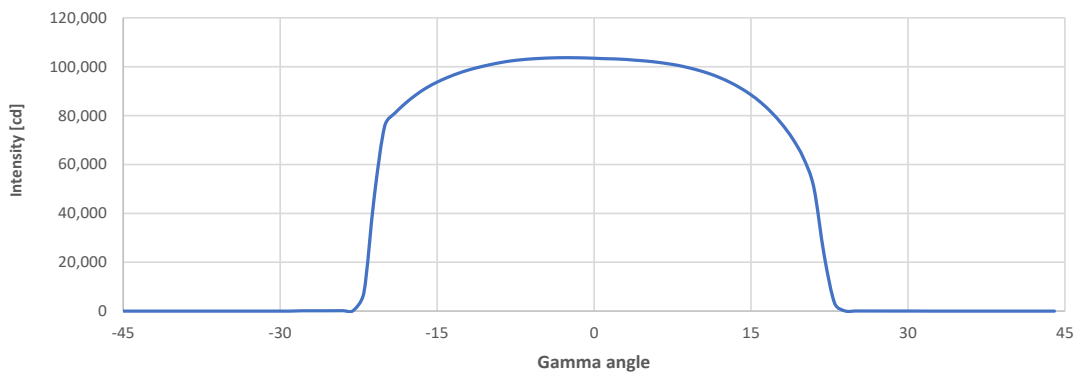


Beam Details

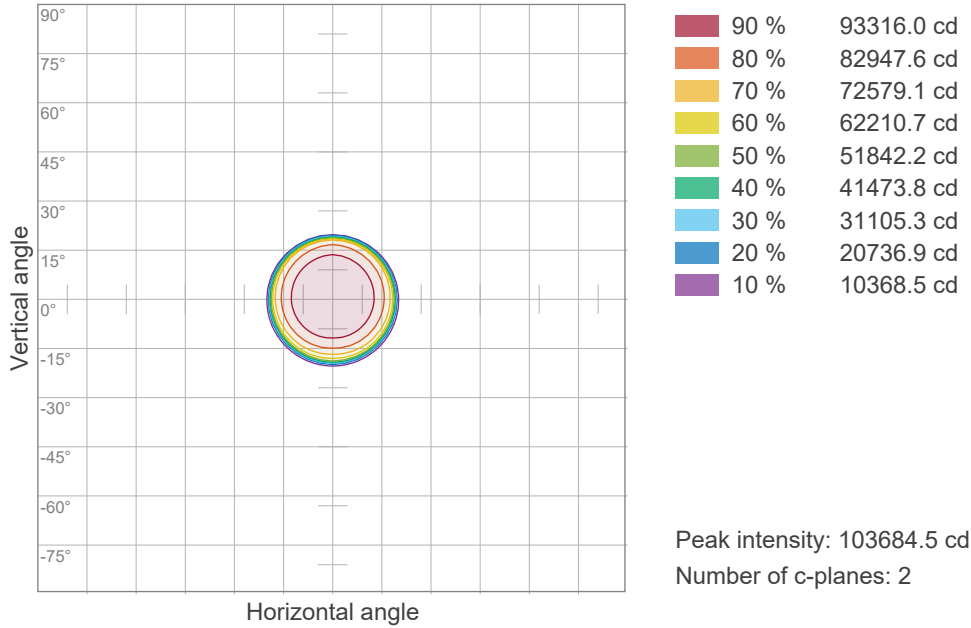


Beam center illuminances from 1 – 20 m (3.3 – 65.6 ft)

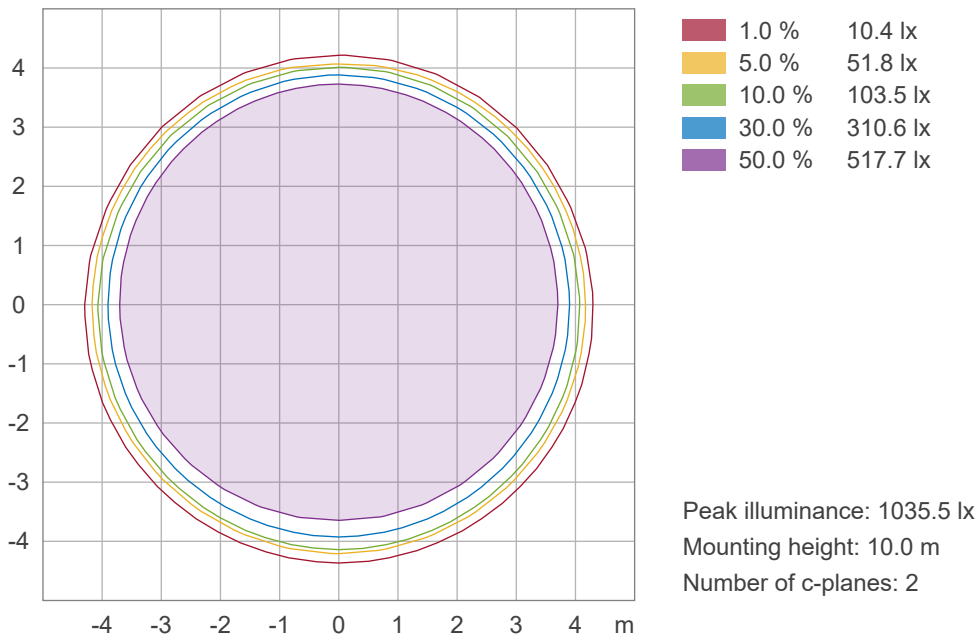
1	2	3	4	5	6	7	8	9	10	11	12	13	14	15	16	17	18	19	20	m
3.3	6.6	9.8	13.1	16.4	19.7	23	26.2	29.5	32.8	36.1	39.4	42.7	45.9	49.2	52.5	55.8	59.1	62.3	65.6	ft
103452	25863	11495	6466	4138	2874	2111	1616	1277	1035	855	718	612	528	460	404	358	319	287	259	lux
9611	2402.8	1067.9	600.7	384.4	267	196.1	150.2	118.7	96.1	79.4	66.7	56.9	49	42.7	37.5	33.3	29.7	26.6	24	fc



Iso-intensity Diagram (Iso-candela)



Iso-illuminance Diagram (Iso-lux)



© 2024 Signify Holding. All rights reserved. All trademarks are owned by Signify Holding or their respective owners. The information provided herein is subject to change, without notice. Signify does not give any representation or warranty as to the accuracy or completeness of the information included herein and shall not be liable for any action in reliance thereon. The information presented in this document is not intended as any commercial offer and does not form part of any quotation or contract, unless otherwise agreed by Signify. Data subject to change