



MSD 575 HR 1CT

Product family description

Architectural MSD – single ended night colors The high luminous efficacy and optimal lamp filling of the single ended Architectural MSD lamps create high beam intensity and excellent color rendering. While the compact arc of the lamp allows efficient beam control and high intensity. Ideal to illuminate architecture of all types at night.

Product Features

- High luminous efficacy
- Long life
- Optimal lamp filling

Product Benefits

- High lumen output
- Low cost of ownership
- Excellent colors

Application

- Display lighting
- Architectural lighting
- Studio and disco lighting
- Fibre-optic lighting

Luminaires

- Luminaire lenses must block the considerable UV output of the lamps
- No radiation must be spilled through ventilation slots
- Must only be operated in closed luminaires because of the high internal working pressure (but completely safe to handle when cold)

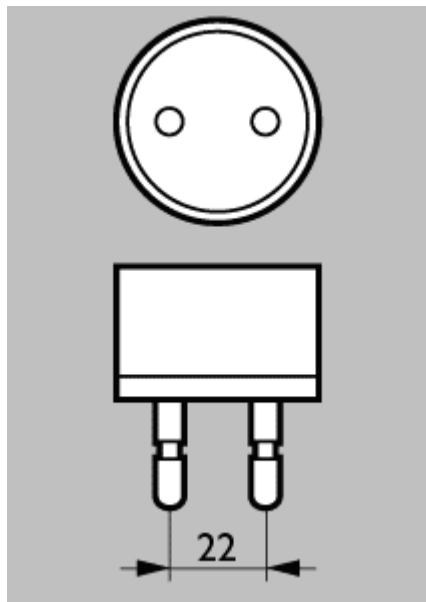
Product data	
Order code	MSD575HR
Full product name	MSD 575 HR 1CT
Packing type	1 Carton
Pieces per pack	1
Net weight per piece	0.100 KG
Successor order code	
System Description	Hot Restrike
Cap-Base	G22

Product data	
Cap-Base Information	20mm
Operating Position	any
Main Application	Studio/Disco
Additional Information	-
Packing Type	1CT [1 Carton]
Packing Configuration	4
Life to 50% failures EM	2000 hr
Lamp Wattage	575W
Technical Type	575
Lamp Wattage Technical	575 W
Lamp Current	6.95 A
Color Code	-
Color Rendering Index	75 Ra8
Color Temperature	6000 K
Luminous Flux Lamp EM	46000 Lm
Luminous Efficacy Lamp EM	80 Lm/W

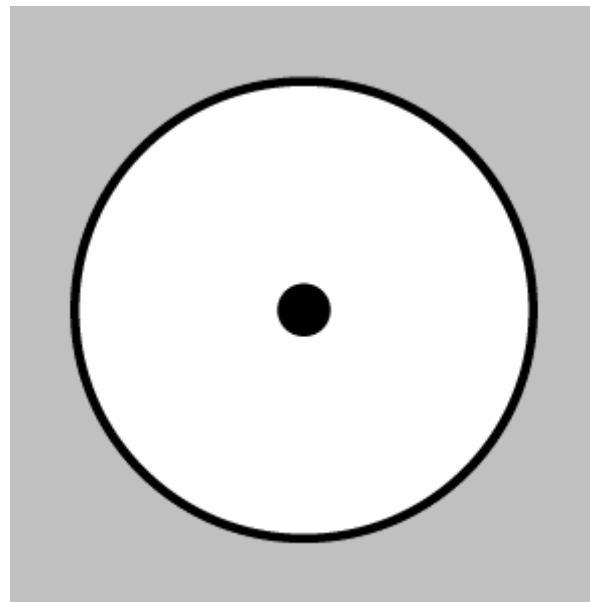


MSD 575 HR

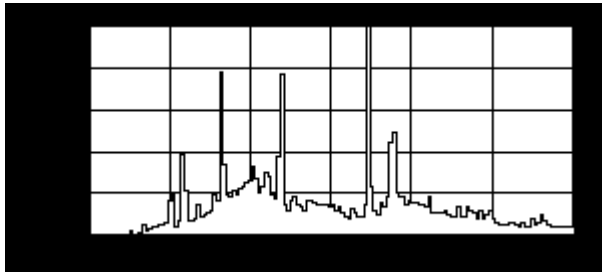
[MSD 575 G22](#)



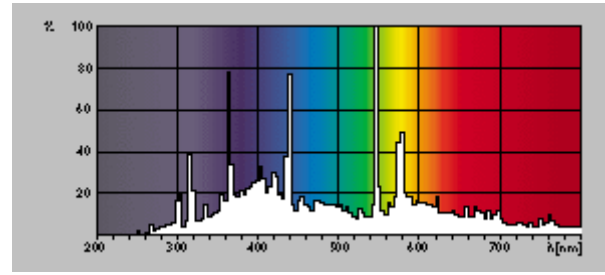
Cap-Base G22



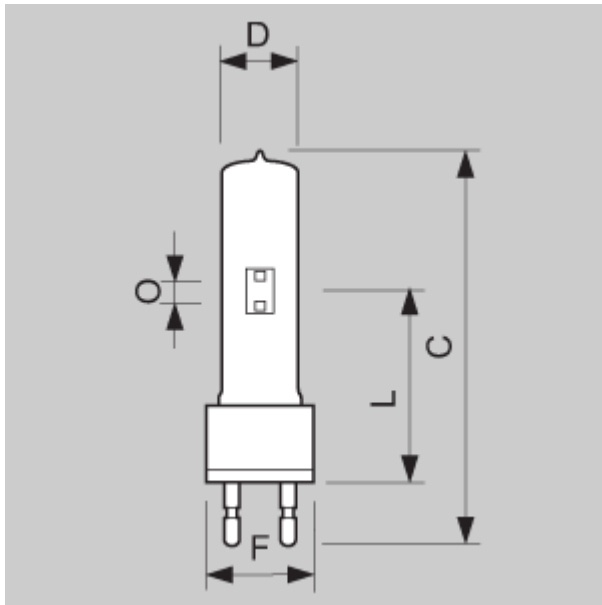
Operating Position any



MSD



MSD



G22

MSD

	C	C	C	D	D	D
Full product name	Max	Max	Max	Max	Max	Max
MSD 575 HR 1CT	145	145	145	30	30	30

	F	F	F	F	F	F
Full product name	Min	Min	Min	Nom	Nom	Nom
MSD 575 HR 1CT	41	41	41	42	42	42

	F	F	F	L	L	L
Full product name	Max	Max	Max	Min	Min	Min
MSD 575 HR 1CT	43	43	43	69	69	69

	L	L	L	L	L	L
Full product name	Nom	Nom	Nom	Max	Max	Max
MSD 575 HR 1CT	70	70	70	71	71	71

	O	O	O	O	O	O
Full product name	Nom	Nom	Nom	Max	Max	Max
MSD 575 HR 1CT	7	7	7	-	-	-

Full product name
MSD 575 HR 1CT



©2009 Koninklijke Philips Electronics N.V.

All rights reserved. Reproduction in whole or in part is prohibited without the prior written consent of the copyright owner. The information presented in this document does not form part of any quotation or contract, is believed to be accurate and reliable and may be changed without notice. No liability will be accepted by the publisher for any consequence of its use. Publication thereof does not convey nor imply any license under patent- or other industrial or intellectual property rights.

Document order number : 0000 000 00000